

Spare Parts List for

18K - dual zone, 24K - triple zone, 30K - quad zone,
42K - five port

Inverter Multi zone Mini-splits



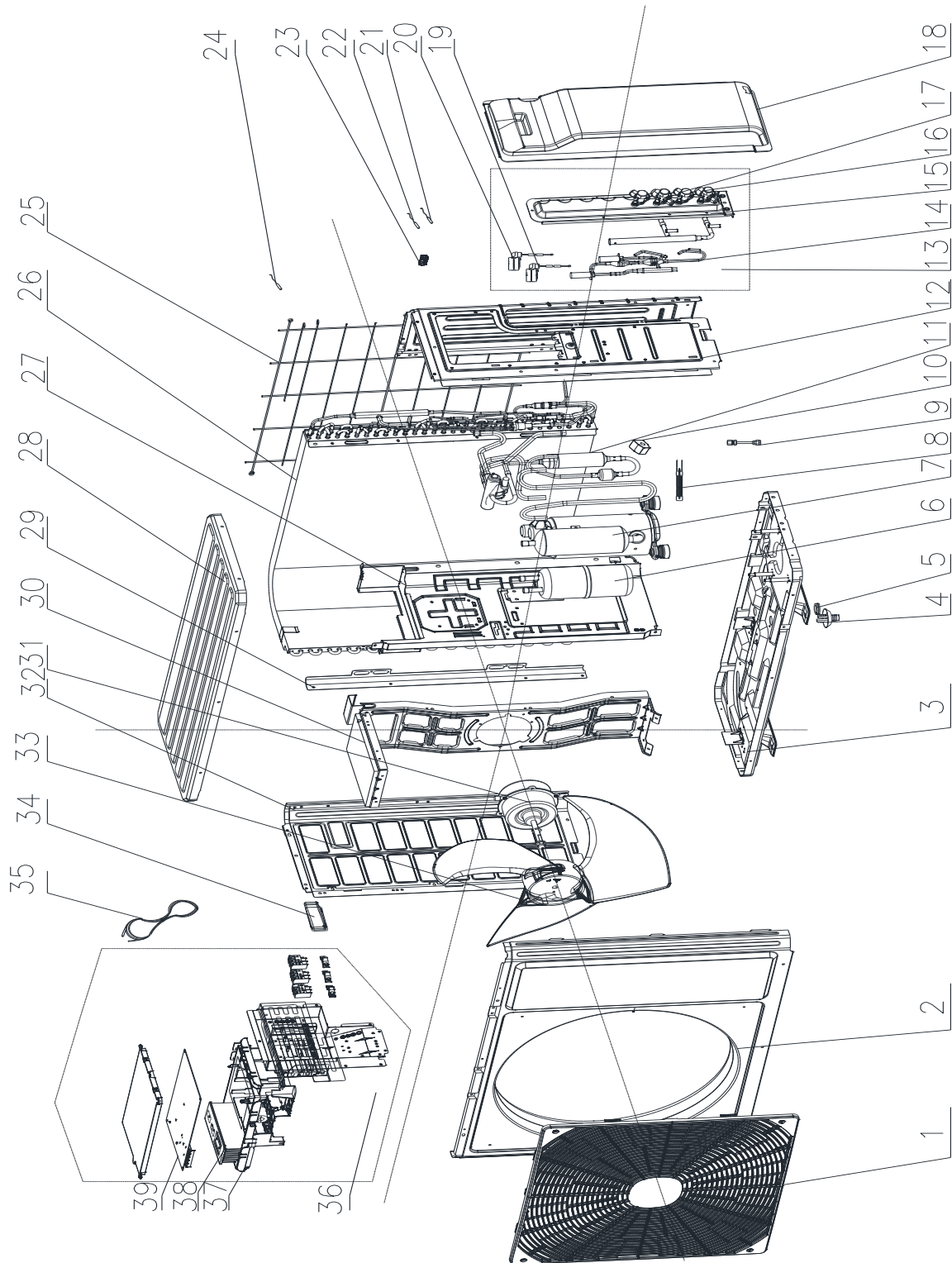
Sea Breeze

FOR MODELS:

SMZ18H422ZOGB, SMZ24H421ZOGB

SMZ30H421ZOGB, SMZ42H421ZOGB

EXPLODED VIEW – OUTDOOR UNIT – SMZ18H422Z0GB

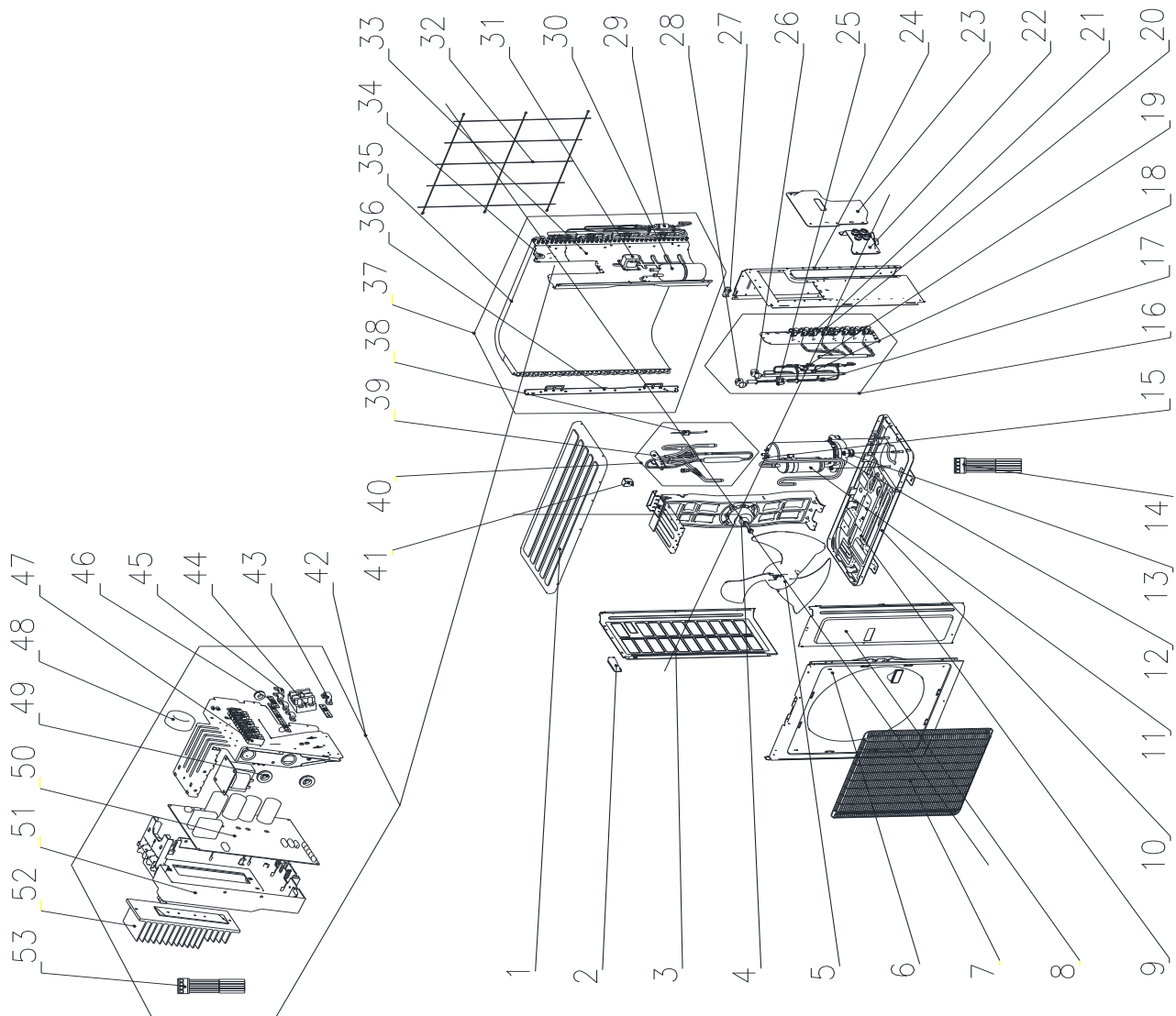


Manufacturer Code: CB228W07700

Location	Part Description	Part Number	Qty
1	Front Grill	01473049	1
2	Front Panel	00000300024	1
3	Chassis Sub-assy	02803263P	1
4	Drainage Connector	06123401	1
5	Drainage hole Cap (Grey)	06813401	1
6	Gas-liquid Separator Assy	07223048	1
7	Compressor and fittings (QXA-B141zF030A)	00105249G	1
Not Shown	Compressor Overload Protector (1NT11L-6233) (External)	00180030	1
Not Shown	Compressor Gasket	76710247	3
8	Electric Heater (Compressor)	7651300403	1
9	Tube Connector Sub-assy	06643008	2
10	Magnet Coil	4300040045	1
11	4-Way Valve Assy	03073328	1
12	Right Side Plate	0130329205	1
13	Valve Support Assy	03016300003	1
14	Electronic Expansion Valve Assy	03017400020	1
Not Shown	Electronic Expansion Valve	07130369	2
15	Valve Support Sub-Assy	0171312802P	1
17	Cut off Valve 3/8"	071302391	2
16	Cut off Valve 1/4"	07130239	2
18	Valve Cover	N/A	N/A
19	Electronic Expansion Valve Fitting (B - Black)	4300008401	1
20	Electronic Expansion Valve Fitting (A - White)	43000084	1
21	Temperature Sensor (20KT/20KT-SMP-04V-800/1150mm-Black)	3900007301	1
22	Temperature Sensor (20KT/20KT-SMP-04V-850/1050mm-White)	39000073	1
23	Wiring Clamp	26115004	1
24	Temperature Sensor (20KT/15KS/50KT-JST-XARP-06V-1200/800/600mm)	3900030901	1
25	Rear Grill	01473043	1
26	Condenser Assy	011002000279	1
27	Clapboard Assy	0123315301	1
28	Coping Sub-Assy	000051000017	1
29	Supporting Board(Condenser)	01795010	1
30	Motor Support Sub-Assy	01705036	1
31	Fan Motor (LW60M-ZL)	1501506402	1
32	Left Side Plate	01305093P	1
33	Axial Flow Fan	10335008	1
34	Left Handle	2623305301	1
35	Connecting Cable	N/A	N/A
36	Electric Box Assy	10000100023	1
37	Electric Box	20113027	1
38	Radiator (TL-002 15X11)	49010252	1
39	Main Board (W8363U)	30138000310	1
Not Shown	Filter Board (LB836C)	30033089	1
Not Shown	Magnetic Ring (83RS 30X13X39)	49010113	1
Not Shown	Strainer	0721304401	2
Not Shown	Capillary tube (TP2Mφ4.0Xφ2.4X300X2T15)	81020167	3

Location	Part Description	Part Number	Qty
Not Shown	Moisture/Water valve protection	76010007	1
Not Shown	Drainage hole Cap (Black)	76713068	1
Not Shown	Drainage hole Cap (Black - Curve)	76713033	1

EXPLODED VIEW – OUTDOOR UNIT – SMZ24H421ZOGB

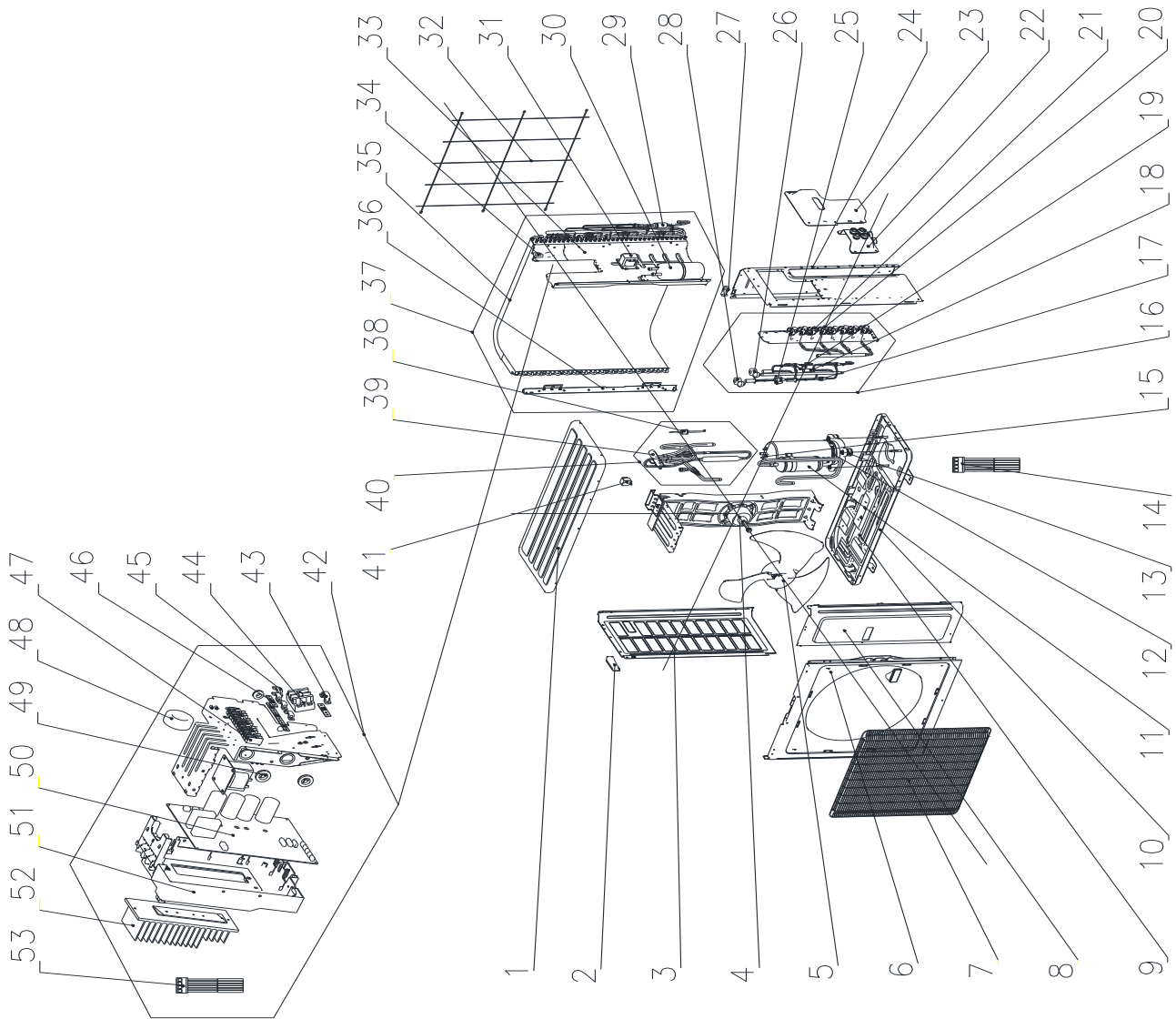


Manufacturer Code: CB228W07800

Location	Part Description	Part Number	Qty
1	Top Cover Sub-Assy	000051000024 ^①	1
2	Left Handle	26233053	1
3	Left Side Plate	01305043P	1
4 ^①	Motor Support Sub-Assy ^①	017012000017 ^①	1 ^①
	Fan Motor (LW92K-ZL)	15010400000102	1
5	Axial Flow Fan	10335014	1
6	Front Panel Assy	0153501405	1
7	Front Grill	016004060005 ^①	1
8	Front Side Plate	01303249P ^①	1
9	Electrical Heater (for Chassis)	7651000411	1
10	Chassis Sub-assy	02803280P	1
11	Compressor Assy (QXAS-D23zX090B)	0010524501	1
12	Electric Heater (for Compressor)	7651873215	1
13	Compressor Gasket	76713066	3
14	Sensor Sub-assy	3900030901 ^①	1 ^①
15	Compressor Overload Protector (1NT11L-6233) (External)	00180030	1
16	Valve Support Assy	0713395401	1
17	Strainer	0721304401	2
18	Electronic Expansion Valve Assy	0713395301	1
19	Electronic Expansion Valve	07130369	3
20	Cut off Valve 3/8"	071302391	3
21	Cut off Valve 1/4"	07130239	3
22	Wiring Cover Sub-assy	01264100034	1
23	Handle Assy	02204100008	1
24	Right Side Plate	0131410000901P	1
25	Electronic Expansion Valve Fitting (C - Red)	4300008402	1
26	Electronic Expansion Valve Fitting (B - Black)	4300008401	1
27	Wiring Clamp	26115004	1
28	Electronic Expansion Valve Fitting (A - White)	43000084	1
29	Bidirection Strainer	N/A	N/A
30	Gas-liquid Separator Assy	07223048	1
31	Reactor	N/A	N/A
32	Rear Grill	01574100003	1
33	Clapboard Sub-Assy	01233190	1
34	Cable Cross Loop	N/A	N/A
35	Condenser Assy	0116398001	1
36	Condenser Support Plate	01175092	1
37	Condenser Assy	N/A	N/A
38	Pressure Protect Switch (YK-4.4/3.8)	460200061	1
39	4-way Valve (DSF-9-R410A/SHF-7H-34U-PG/DHF-9R410A)	430004032	1
40	4-Way Valve Assy	03015200001	1
41	Magnet Coil	4300040045	1
42	Electric Box Assy	10000100020	1
43	Wire Clamp	71010003	1
44	Terminal Board	422000060015 ^①	1

Location	Part Description	Part Number	Qty
45	Wire Clamp	71010003	3
46	Insulation Gasket (Grey)	70410503 ^①	2
47	Terminal Board	42200006001301 ^①	1 ^①
48	Magnetic Ring (83RS 30X13X39)	49010113	2
49	Cable Cross Loop	76510021	2
50	Main Board (W8363V)	30138000311	1
51	Electric Box	20113015	1
52	Radiator (SRX21D96)	49013052	1
53	Sensor Sub-assy (20KT/20KT-SMP-04V(White)-850/1050mm) ^①	39000073 ^①	1 ^①
Not Shown	Drainage Joint	06123401	1
Not Shown	Drainage hole Cap (Grey)	06813401	1
Not Shown	Drainage hole Cap (Black)	7671301802	2
Not Shown	Moisture/Water valve protection	7601001301	1
Not Shown	Moisture/Water valve protection	76010055	1

EXPLODED VIEW – OUTDOOR UNIT – SMZ30H421ZOGB

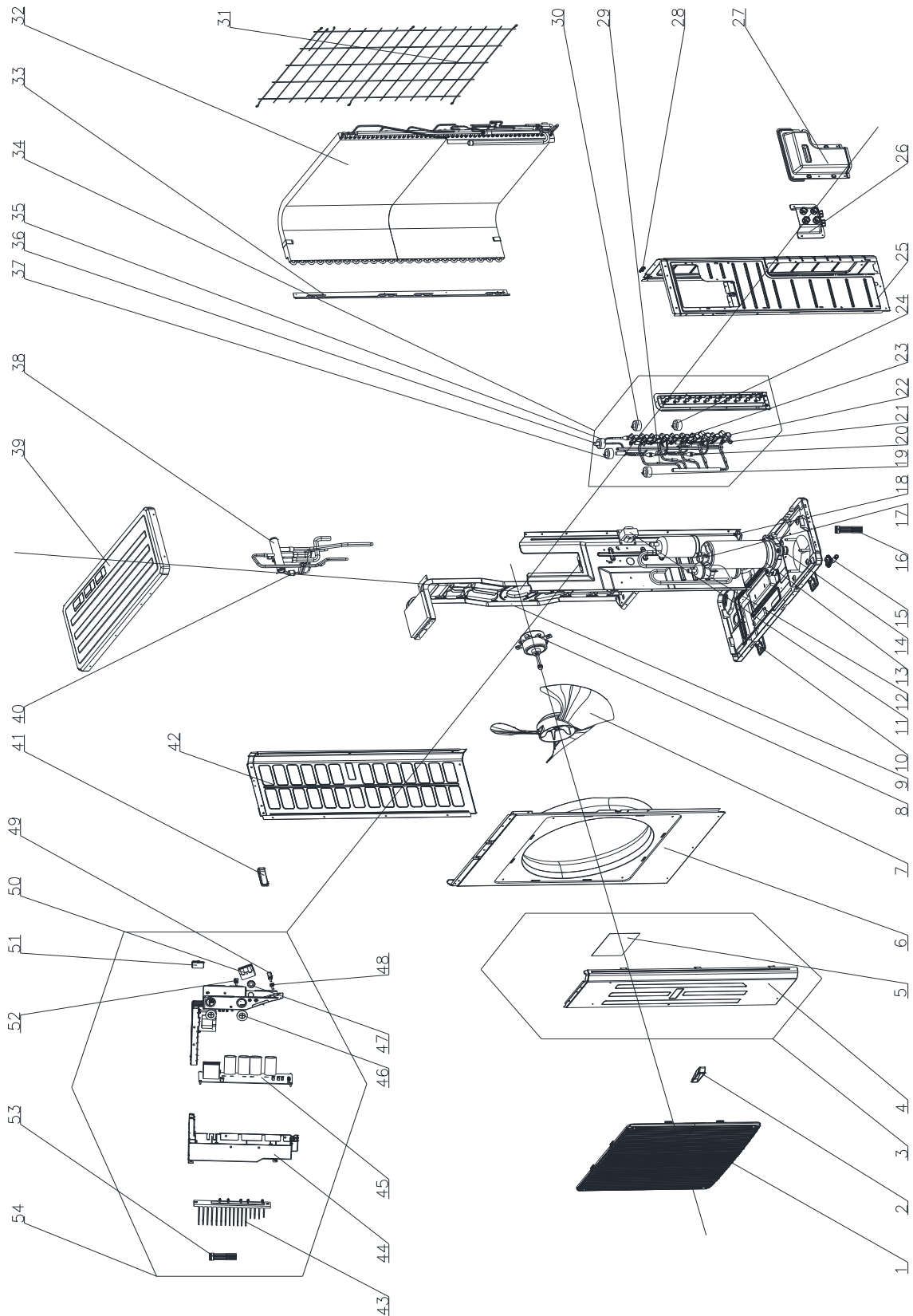


Manufacturer Code: CB228W07900

Location	Part Description	Part Number	Qty
1	Top Cover Sub-Assy	01264100013	1
2	Handle	26233053	1
3	Left Side Plate	01305043P	1
4	Fan Motor (SWZ150A)	15702802	1
5	Axial Flow Fan	10335014	1
6	Front Panel Assy	0153501405	1
7	Front Grill	01473050	1
8	Front Side Plate	01305086P	1
9	Electrical Heater (Chassis)	765100047	1
10	Chassis Assy	01194100059	1
11	Compressor Assy (QXAS-D32zX090A)	00205200003	1
12	Electric Heater (Compressor)	7651873215	1
13	Compressor Gasket	76713066	3
14	Sensor Sub-assy	39008000017G	1
15	Compressor Overload Protector (1NT11L-6233) (External)	00180030	1
16	Valve Support Assy	030163000003	1
17	Strainer A	07210022	2
18	Electronic Expansion Valve Assy	030174000014	1
Not Shown	Electronic Expansion Valve	07334447	4
19	Electronic Expansion Valve Fitting (D - Red, QKV)	4304413222	1
20	Cut off Valve 3/8"	071302391	4
21	Cut off Valve 1/4"	07130239	4
22	Wiring Cover Sub-assy	01264100034	1
23	Handle Assy	02204100008	1
24	Right Side Plate	0131410000901P	1
25	Electronic Expansion Valve Fitting (C - Blue, UKV)	4304413234	1
26	Electronic Expansion Valve Fitting (B - Green, UKV)	4304413235	1
27	Wiring Clamp	26115004	1
28	Electronic Expansion Valve Fitting (A - Black, UKV)	4304413237	1
29	Bidirection Strainer	07220016	1
30	Gas-liquid Separator Assy	07225017	1
31	Reactor (3.5mH/16A)	43130186	1
32	Rear Grill	01574100003	1
33	Clapboard	01244100003	1
34	Cable Cross Loop	76512008	2
35	Condenser Assy	01124100007	1
36	Condenser Support Plate	01175092	1
37	Condenser Assy	01124100118	1
38	Pressure Protect Switch (YKB-4.2/3.6-C)	4602000902	1
39	4-way Valve (DSF-11-R410A/SHF-9H-35U/STF-0223G)	4300008201	1
40	4-Way Valve Assy	04045200071	1
41	Magnet Coil	4300040072	1
42	Electric Box Assy (GWHD(30)BD3AO)	01395200378	1
43	Wire Clamp	71010005	1
44	Terminal Board	42018094	1
45	Wire Clamp	71010003	3

Location	Part Description	Part Number	Qty
46	Insulation Gasket	70410503	2
47	Terminal Board	420111041	3
48	Magnetic Ring (IV 38X13X19)	49010109	2
49	Cable Cross Loop	76510021	1
50	Main Board (WZ80A3A)	30228000026	1
51	Electric Box	26904100013	1
52	Radiator (SRX02D246)	49018000077	1
53	Sensor Sub-assy	39004100005G	1
Not	High Ffrequency Transfformer (KDB-28-04029 Invertor)	43110030	1
Not	Drainage Joint	06123401	1
Not	Drainage hole Cap (Grey)	06813401	1
Not	Drainage hole Cap (Black)	7671301802	2
Not Shown	Moisture/Water valve protection	7601001301	3

EXPLODED VIEW – OUTDOOR UNIT – SMZ42H421Z0GB



Manufacturer Code: CN860W0180

Location	Part Description	Part Number	Qty
1	Front Grill	01574106	1
2	Handle	26235253	1
3	Front Side Plate Sub-Assy	01305508	1
4	Front Side Plate	01305065P	1
5	Insulated Cover of Electric Box	20113003	1
6	Cabinet	01435007P	1
7	Axial Flow Fan	10335010	1
8	Fan Motor (SWZ150B)	1570280201	1
9	Motor Support Assy	01805200256	1
10	Electrical Heater (Chasiss)	765100047	1
11	Reactor (3.5mH/16A)	43130186	1
12	Compressor & Fitting (QXAS-D32zX090A)	00205200003	1
13	Electrical Heater (Compressor)	7651873209	1
14	Compressor Gasket	76713066	3
15	Drainage Joint	26113009	1
16	Sensor Sub-assy	39004100007G	1
17	Compressor Overload Protector (1NT11L-6233) (External)	00180030	1
18	Bolt (M6X16)	70210051	2
19	Electronic Expansion Valve Fitting (E - Red, QKV)	4304413222	1
20	Strainer A	07210022	2
21	Bidirection Strainer	07220016	1
22	Cut off Valve 3/8"	071302391	5
23	Cut off Valve 1/4"	07130239	5
24	Electronic Expansion Valve Fitting (D - Blue, UKV)	4304413234	1
25	Right Side Plate	0131410002701P	1
26	Wiring Cover Sub-assy	01264100034	1
27	Handle Assy	02204100008	1
28	Wiring Clamp	26115004	1
29	Temperature Sensor Sleeving	05212423	9
30	Electronic Expansion Valve Fitting (A - White, UKV)	4304413208	1
31	Rear Grill	01574100007	1
32	Condenser Assy	01124100116	1
33	Condenser support plate	01895309	1
34	Valve Support Assy	030163000008	1
35	Electronic Expansion Valve Fitting (B - Black, UKV)	4304413237	1
36	Electronic Expansion Valve Assy	030174000020	1
Not Shown	Electronic Expansion Valve	07334447	5
37	Electronic Expansion Valve Fitting (C - Green, UKV)	4304413235	1
38	4-way Valve Assy	04045200070	1
39	Top Cover Sub-Assy	01264100028	1
40	Pressure Protect Switch (YKB-4.5/3.8-C) ^②	46020015108 ^②	1
41	Left Handle	26235401	1
42	Left Side Plate	01305064P	1
43	Radiator (SRX02D246)	49018000077	1
44	Electric Box	26904100013	1

Location	Part Description	Part Number	Qty
45	Main Board (WZ80A3)	30228000025	1
46	Cable Cross Loop	76510021	2
47	Magnetic Ring (IV 38X13X19)	49010109	4
48	Insulation Gasket	70410006	1
49	Wire Clamp	71010005	1
50	Terminal Board	42018094	1
51	Terminal Board	420111041	5
52	Wire Clamp	71010003	5
53	Sensor Sub-assy	39004100006G	1
54	Electric Box Assy (GWHD(42)BD3AO)	1395200377	1
Not Shown	Gas-liquid Separator Assy	07424100020	1
Not Shown	High Fgrequency Transfformer (KDB-28-04029 Invertor)	43110030	1
Not Shown	Radiator (TL-002 15X11)	49010252	1
Not Shown	Drainage hole Cap	76715005	2
Not Shown	Tubing Adaptor (951-0515, 3/8"F to 1/2"M)	06654100013	4
Not Shown	Tubing Adaptor (951-0516, 3/8"F to 5/8"M)	06654100009	3
Not Shown	Tubing Adaptor (951-0517, 1/4"F to 3/8"M)	06654104	2
Not Shown	Moisture/Water valve protection	7601001301	4

Updates

Revisions		Date
①	Updated the P/N's for 24K unit.	8/15/2019
②	Correct the P/N of Pressure Protect Switch (location # 40) for 42K unit.	3/13/2020