

Spare Parts List for Air Handler Units Evox Series Heat Pump

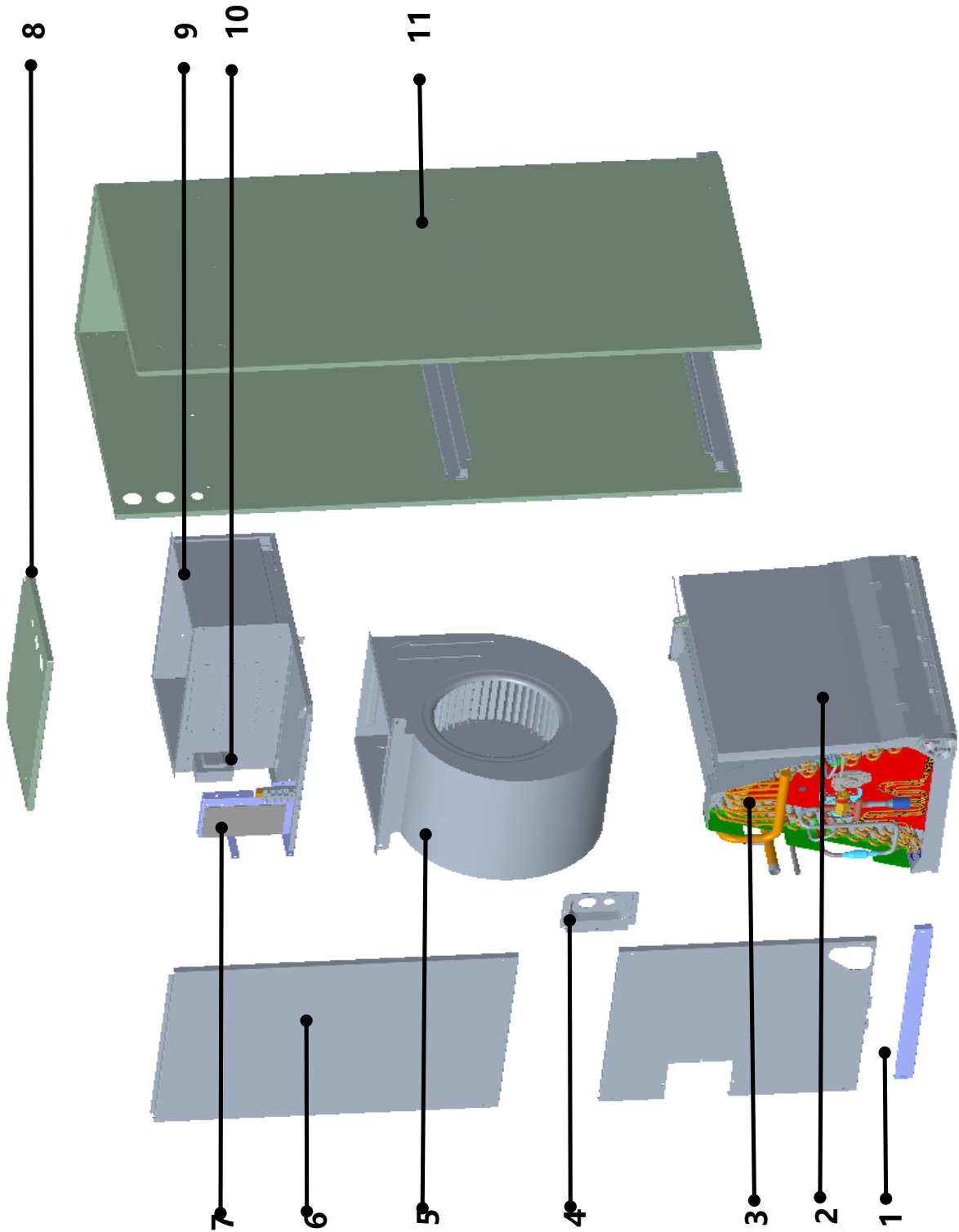


Thermal Zone

FOR MODELS:

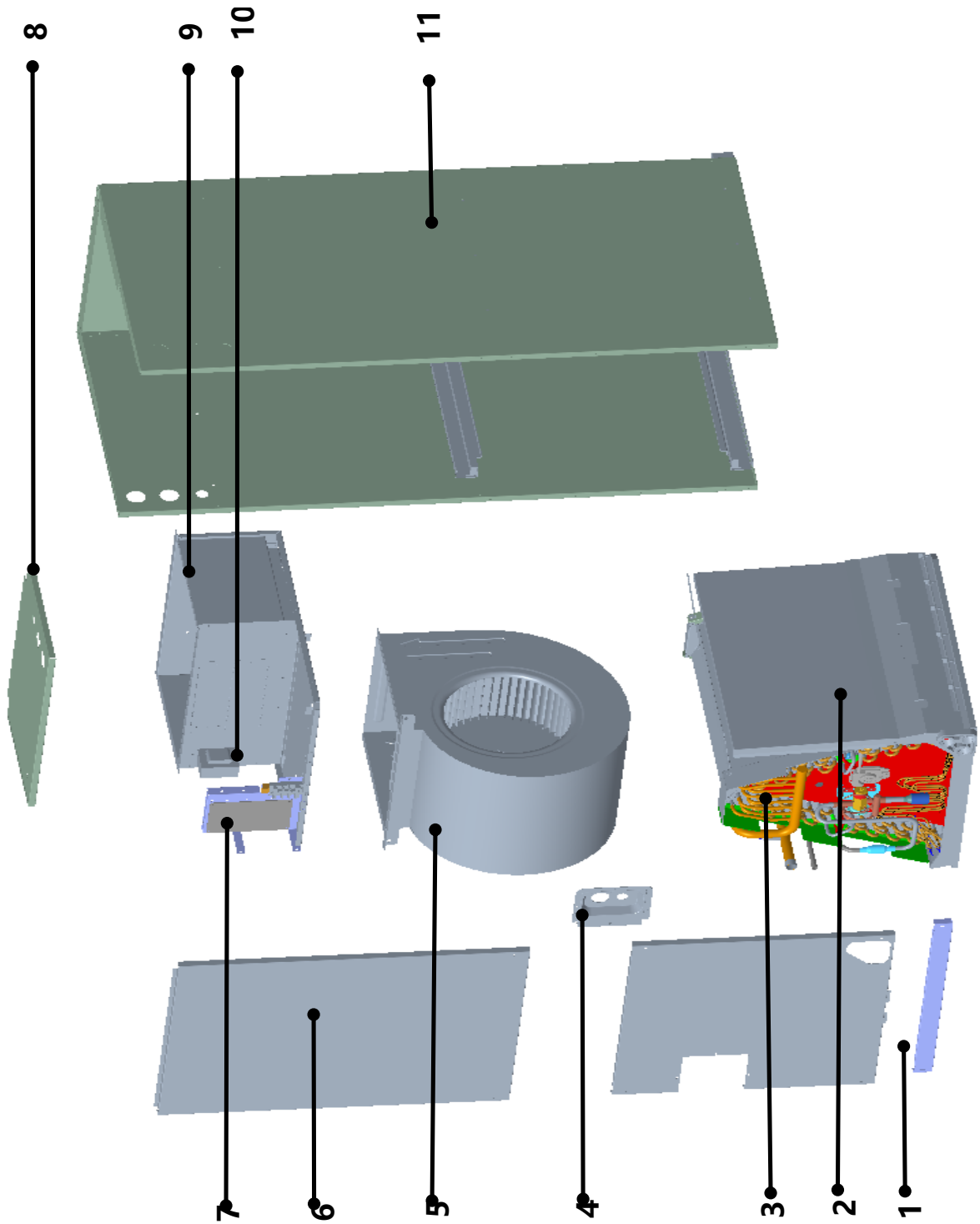
TZID24H520ZA, TZID36H520ZA, TZID48H520ZA, TZID60H520ZA

EXPLODED VIEW – INDOOR AIR HANDLER – TZID24H520ZA



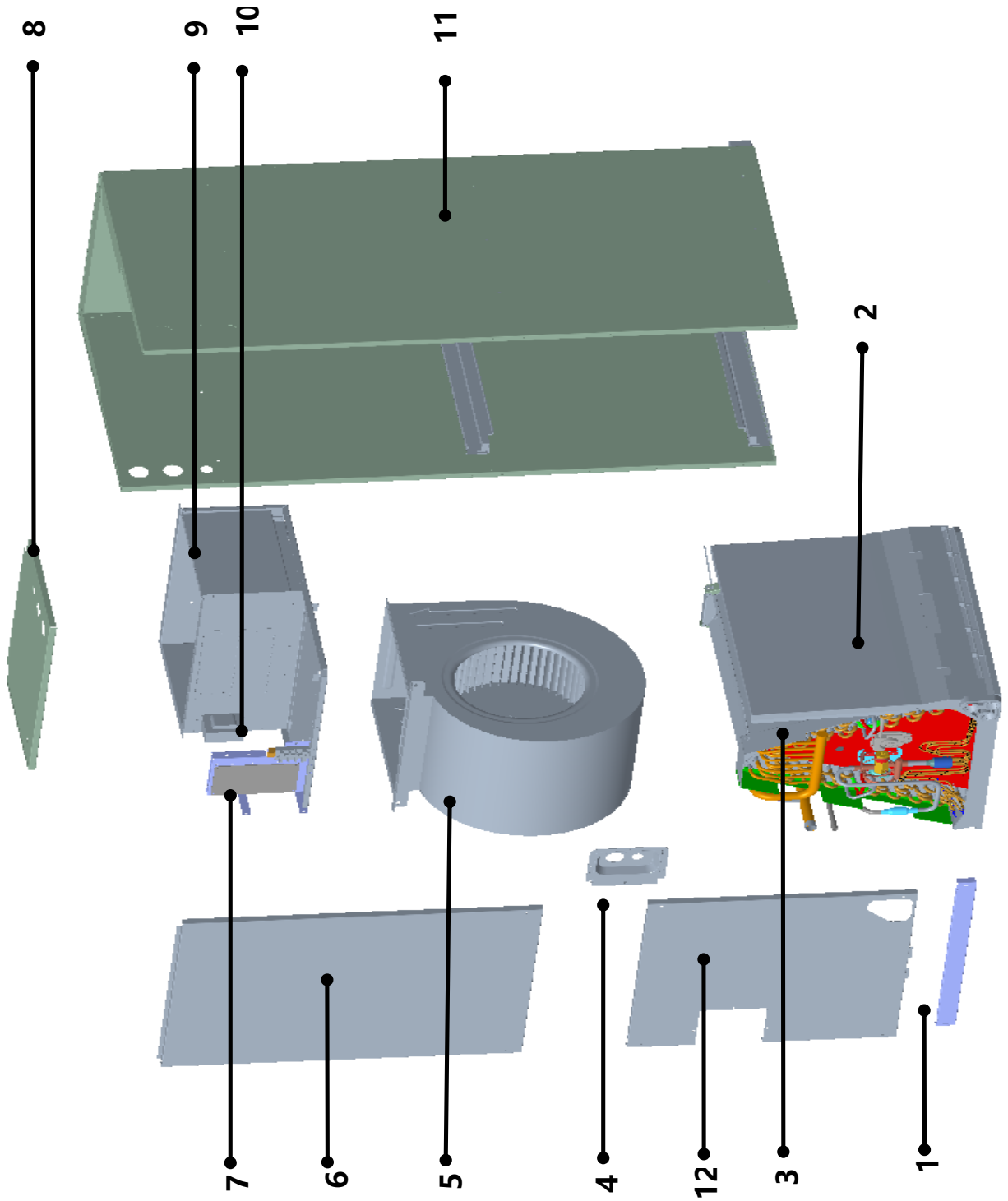
Location	Part Description	Part Number	Qty
1	Filter Cover plate	801233590166	1
2	Drain pan assembly	801134590006	1
2.1	Water pan# 1	801134590002	1
2.2	Water pan# 2	801234590101	1
2.3	Water pan brace	801234190193	2
3	Evaporator components	801535000050	1
3.1	Evaporator output tube assembly	801635000116	1
3.2	Evaporator input tube assembly	801635000117	1
3.3	Evaporator	8015350A0047	2
3.4	Evaporator baffle	801234590095	1
3.5	Evaporator baffle	801235000142	1
3.6	Evaporator baffle	801235000143	1
3.7	Evaporator baffle	801235000150	1
3.8	Evaporator Fixing Plate #1	801233590141	1
3.9	TXV	801602700472	1
4	Pipe Cover plate assembly	801235000073	1
5	Volute casing with impeller	801200200040	1
6	Upper side plate assembly	801235000146	1
7	Indoor electric control box assembly	803344000321	1
7.1	main board	801306200001	1
8	Control box cover assembly	801235000148	1
9	Duct assembly	801235000172	1
10	Transformers	802311300001	1
11	Rear Enclosure Assembly	801235000155	1
12	Refrigerant leakage sensor	802301800001	1
13	Temp. sensor (T1)	802301500028	1
14	Temp. sensor (T2)	802300400181	1
15	DC motor	802401700427	1

EXPLODED VIEW – INDOOR AIR HANDLER – TZID36H520ZA



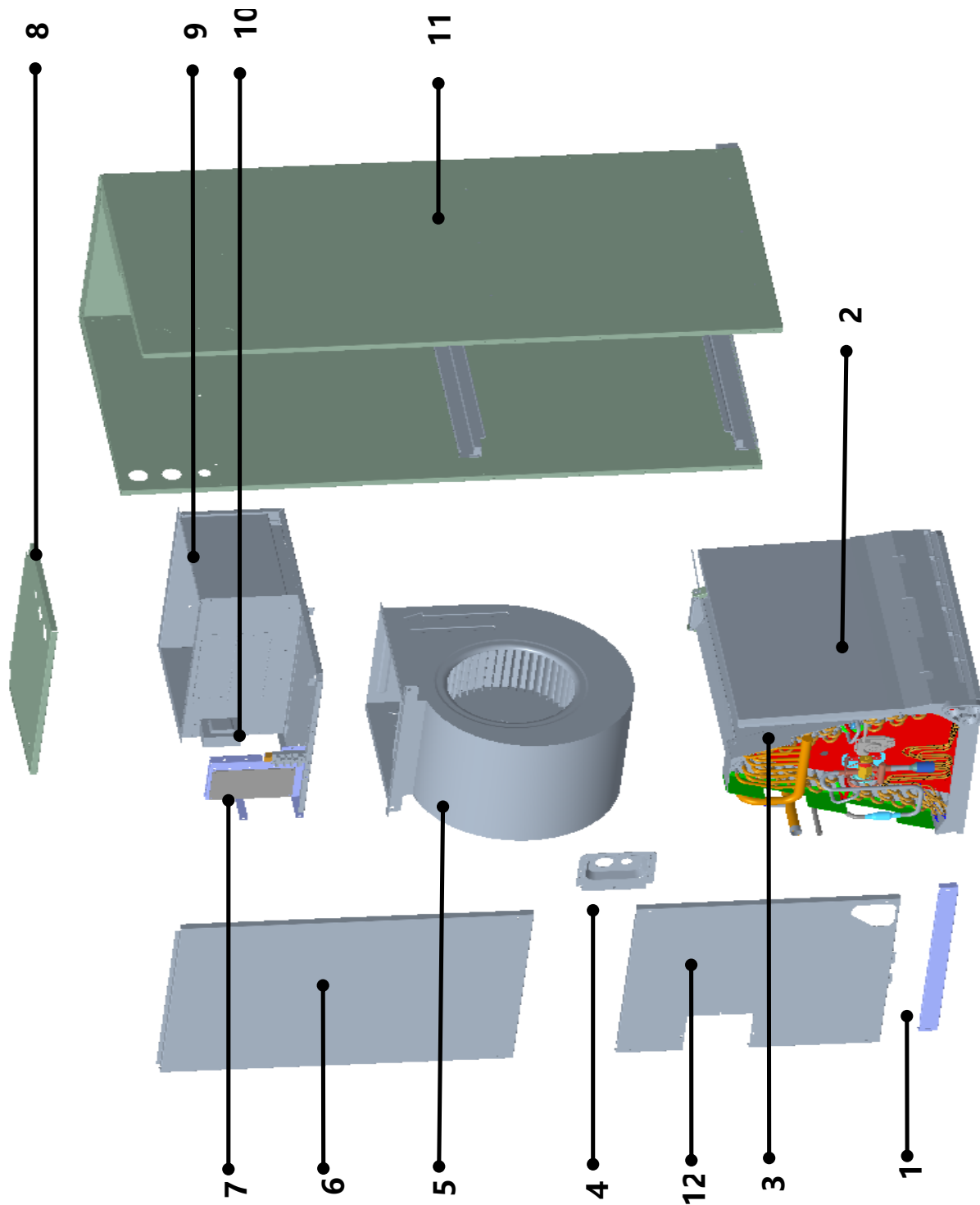
Location	Part Description	Part Number	Qty
1	Filter Cover plate	801233590166	1
2	Drain pan assembly	801134590006	1
2.1	Water pan# 1	801134590002	1
2.2	Water pan# 2	801234590101	1
2.3	Water pan brace	801234190193	2
3	Evaporator components	801535000050	1
3.1	Evaporator output tube assembly	801635000116	1
3.2	Evaporator input tube assembly	801635000117	1
3.3	Evaporator	8015350A0047	2
3.4	Evaporator baffle	801234590095	1
3.5	Evaporator baffle	801235000142	1
3.6	Evaporator baffle	801235000143	1
3.7	Evaporator baffle	801235000150	1
3.8	Evaporator Fixing Plate #1	801233590141	1
3.9	TXV	801602700472	1
4	Pipe Cover plate assembly	801235000073	1
5	Volute casing with impeller	801200200040	1
6	Upper side plate assembly	801235000146	1
7	Indoor electric control box assembly	803344000321	1
7.1	main board	801306200001	1
8	Control box cover assembly	801235000148	1
9	Duct assembly	801235000172	1
10	Transformers	802311300001	1
11	Rear Enclosure Assembly	801235000155	1
12	Refrigerant leakage sensor	802301800001	1
13	Temp. sensor (T1)	802301500028	1
14	Temp. sensor (T2)	802300400181	1
15	DC motor	802401700430	1

EXPLODED VIEW – INDOOR AIR HANDLER – TZID48H520ZA



Location	Part Description	Part Number	Qty
1	Filter Cover plate	801239390088	1
2	Water pan components	801235000123	1
2.1	Water pan# 1	801239390029	1
2.2	Water pan# 2	801139390002	1
2.3	Water pan brace	801234190193	2
3	Evaporator components	801535000049	1
3.1	Evaporator output tube assembly	801635000151	1
3.2	Evaporator input tube assembly	801635000111	1
3.4	Evaporator baffle	8012350A0074	1
3.5	Evaporator baffle	801235000124	1
3.6	Evaporator baffle	801235000125	1
3.7	Evaporator baffle	801235000126	1
3.8	Evaporator baffle	801235000127	1
3.9	Evaporator Fixing Plate #1	801239390053	1
3.10	Evaporator Fixing Plate #1	801239390056	1
3.11	TXV	801602700471	1
4	Pipe Cover plate assembly	801235000073	1
5	Right Volute Wind Wheel	801200200040	1
6	Upper side plate assembly	801243100007	1
7	Indoor electric control box assembly	803344000321	1
7.1	main board	801306200001	1
8	Control box cover assembly	801235000131	1
9	Duct assembly	801235000176	1
10	Transformers	802311300001	1
11	Rear Enclosure Assembly	801235000151	1
12	Down side plate assembly	801243100008	1
13	Refrigerant leakage sensor	802301800001	1
14	Temp. sensor (T1)	802301500028	1
15	Temp. sensor (T2)	802300400181	1
16	DC motor	802401700428	1

EXPLODED VIEW – INDOOR AIR HANDLER – TZID60H520ZA



Location	Part Description	Part Number	Qty
1	Filter Cover plate	801239390088	1
2	Water pan components	801235000123	1
2.1	Water pan# 1	801239390029	1
2.2	Water pan# 2	801139390002	1
2.3	Water pan brace	801234190193	2
3	Evaporator components	801535000049	1
3.1	Evaporator output tube assembly	801635000151	1
3.2	Evaporator input tube assembly	801635000111	1
3.4	Evaporator baffle	8012350A0074	1
3.5	Evaporator baffle	801235000124	1
3.6	Evaporator baffle	801235000125	1
3.7	Evaporator baffle	801235000126	1
3.8	Evaporator baffle	801235000127	1
3.9	Evaporator Fixing Plate #1	801239390053	1
3.10	Evaporator Fixing Plate #1	801239390056	1
3.11	TXV	801602700471	1
4	Pipe Cover plate assembly	801235000073	1
5	Right Volute Wind Wheel	801200200040	1
6	Upper side plate assembly	801243100007	1
7	Indoor electric control box assembly	803344000321	1
8	Control box cover assembly	801235000131	1
9	Duct assembly	801235000176	1
10	Transformers	802311300001	1
11	Rear Enclosure Assembly	801235000151	1
12	Down side plate assembly	801243100008	1
13	Refrigerant leakage sensor	802301800001	1
14	Temp. sensor (T1)	802301500028	1
15	Temp. sensor (T2)	802300400181	1
16	DC motor	802401700428	1

Updates

Correction

Date

	Correction	Date